

SQL Server Lockdown: Options for high-security scenarios

Ed Leighton-Dick

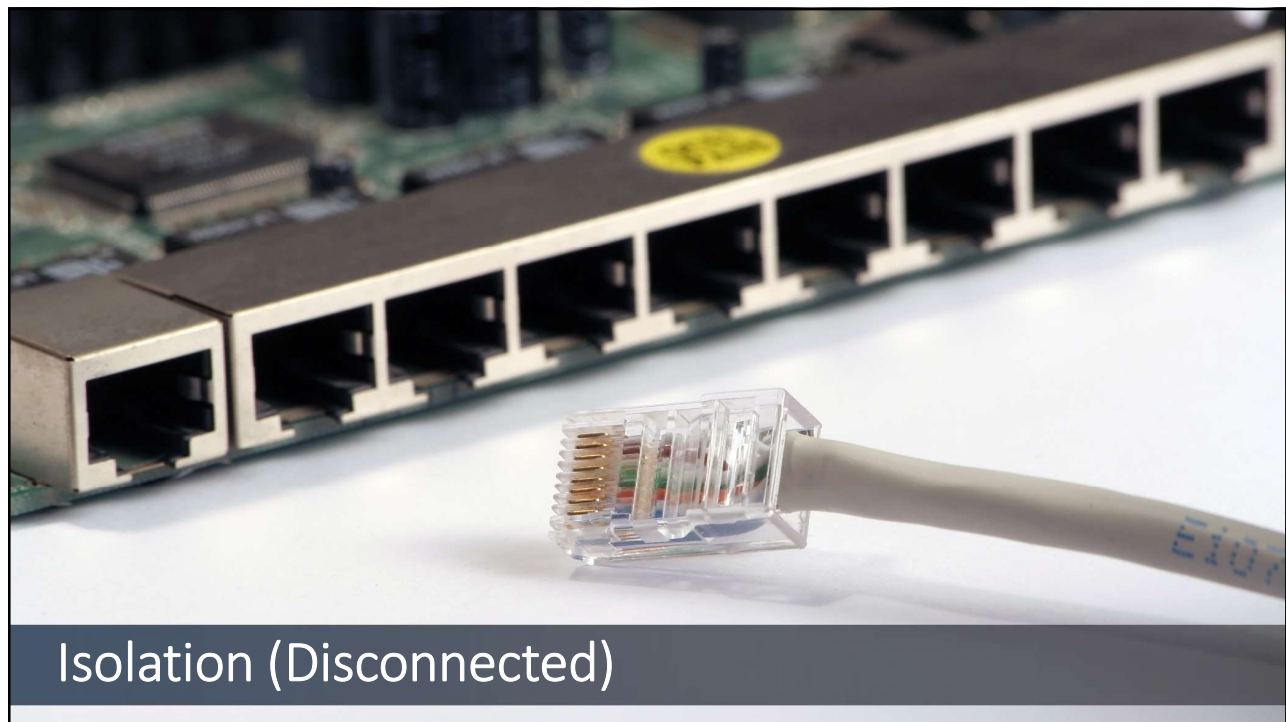


1

The scenario

- Company was retiring an old system containing significant PII
- Required to retain data, but didn't want to spend a lot to do it
- Data should have minimal access
 - No access by IT, ideally
- No high-security data center

2



3



4



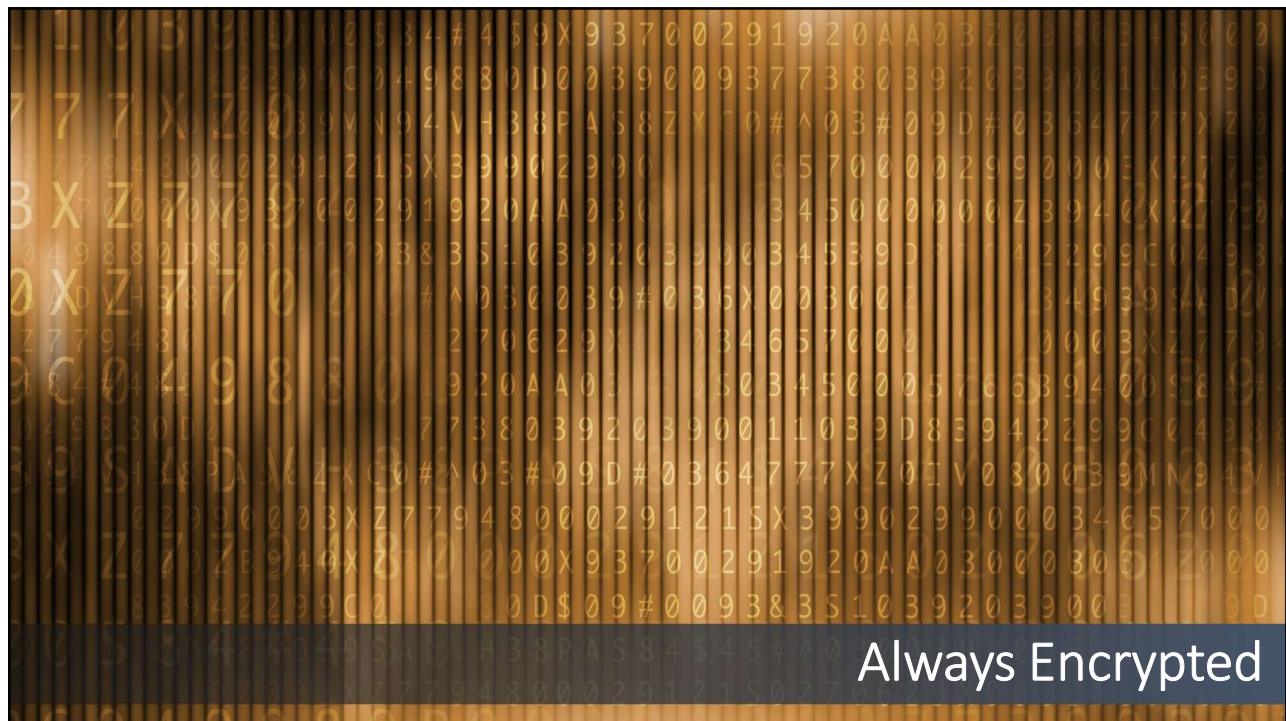
5



6



7

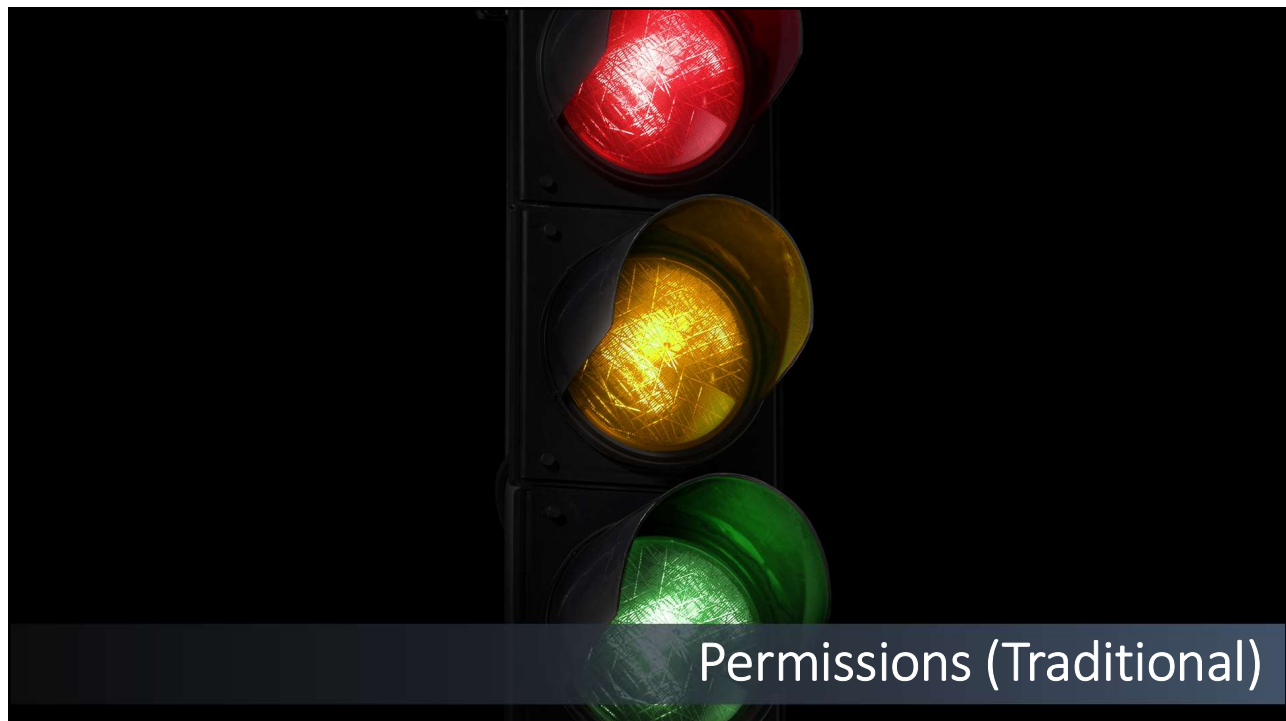


8



Transparent Data Encryption

9



Permissions (Traditional)

10



11



12

